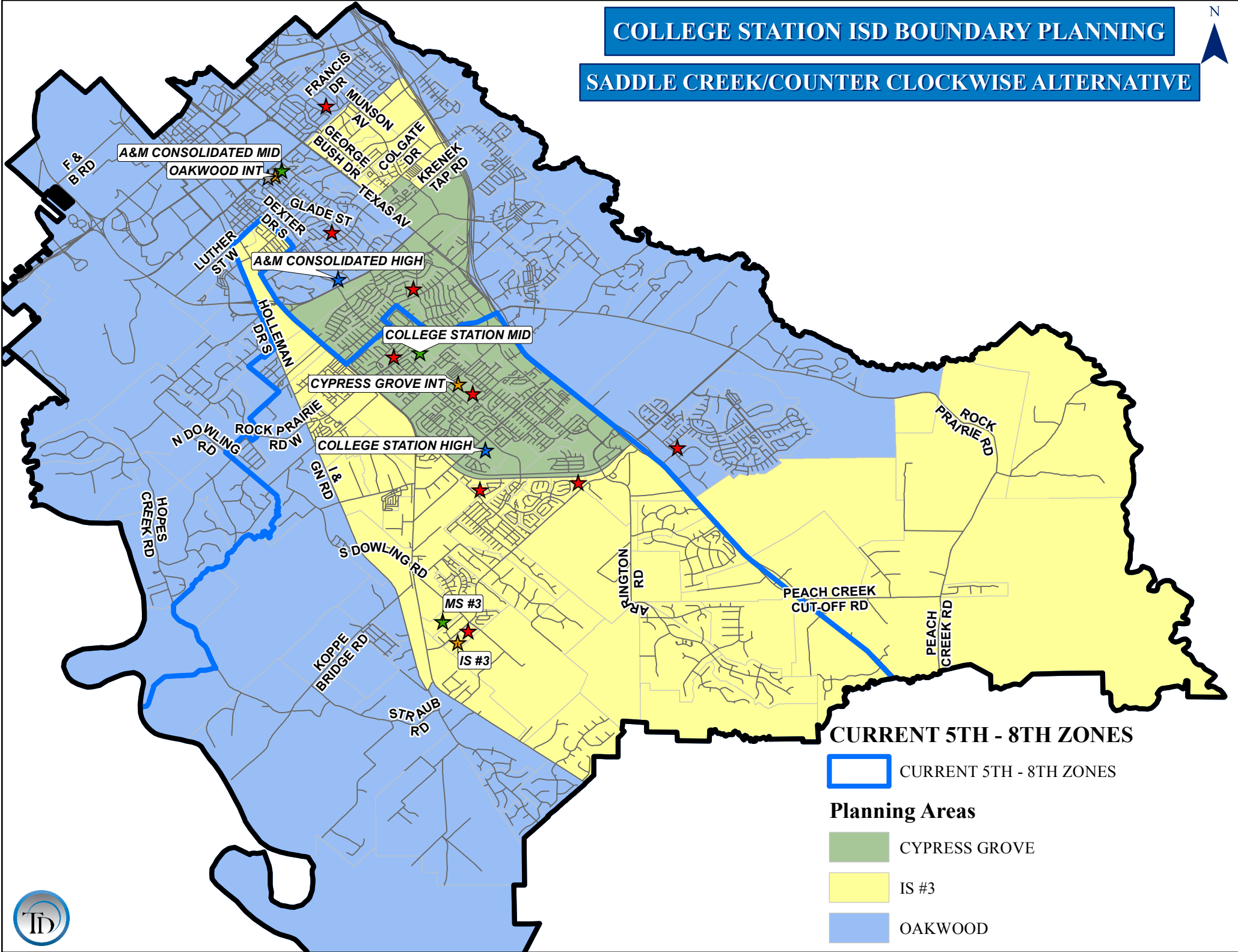


COLLEGE STATION ISD BOUNDARY PLANNING

SADDLE CREEK/COUNTER CLOCKWISE ALTERNATIVE



CURRENT 5TH - 8TH ZONES

 CURRENT 5TH - 8TH ZONES

Planning Areas

 CYPRESS GROVE

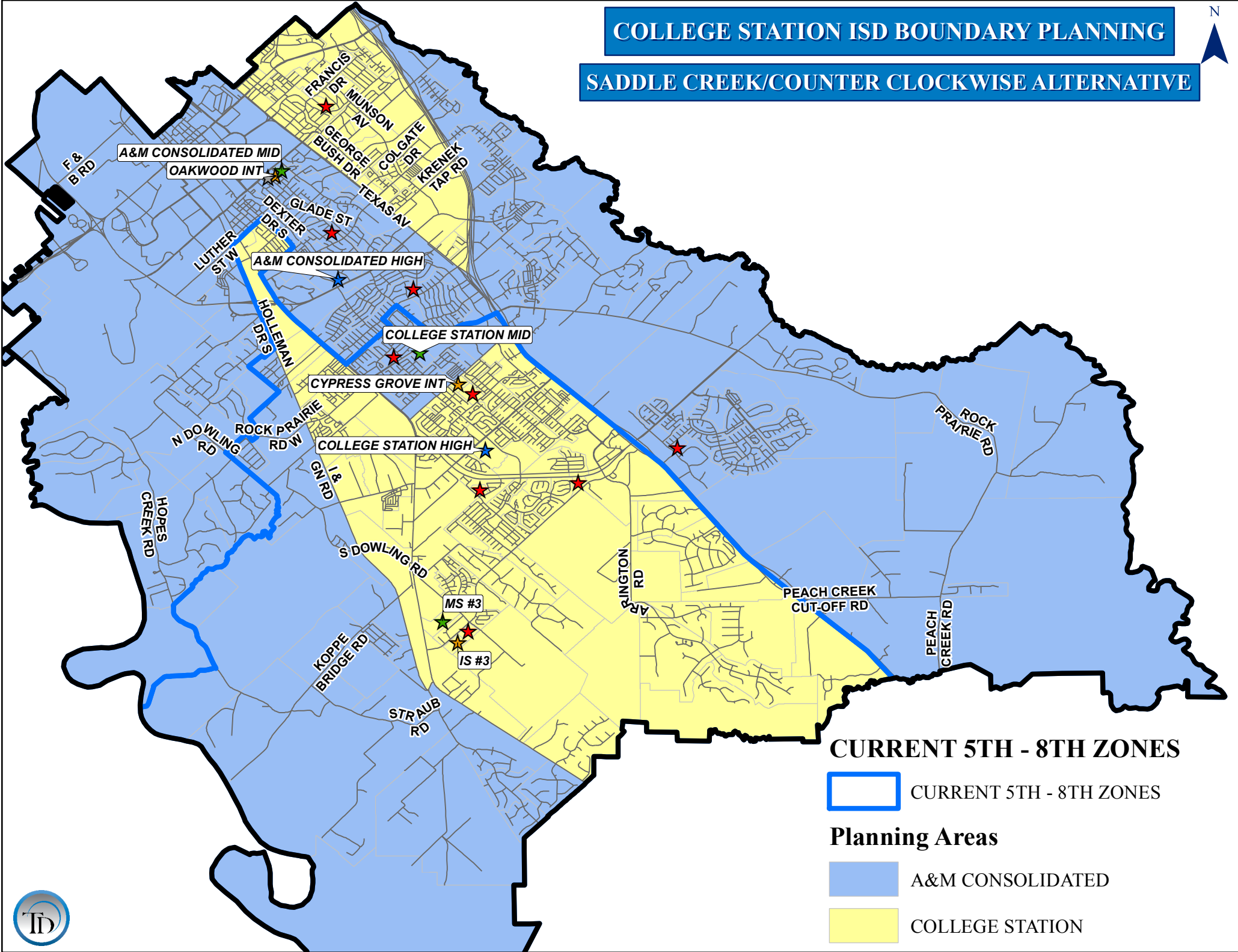
 IS #3

 OAKWOOD



COLLEGE STATION ISD BOUNDARY PLANNING

SADDLE CREEK/COUNTER CLOCKWISE ALTERNATIVE



COLLEGE STATION ISD

Saddle Creek Counter Clockwise Intermediate Grade and Forecast Reports

SCHOOL	5	6	TOTAL	CAPACITY	UTILIZATION	ED	%ED
CYPRESS GROVE	372	369	741			260	35.1%
IS #3	268	240	508			207	40.7%
OAKWOOD	341	337	678			227	33.5%
TOTAL	981	946	1,927			694	36.0%

SCHOOL	2015/16	2016/17	2017/18	2018/19	2019/20	2020/21	2021/22	2022/23	2023/24	2024/25	2025/26
CYPRESS GROVE	741	755	786	853	868	859	855	870	875	882	870
IS #3	508	516	566	629	651	662	674	713	739	769	780
OAKWOOD	678	709	762	793	827	812	804	807	819	833	831
TOTAL	1,927	1,980	2,114	2,275	2,346	2,333	2,333	2,390	2,433	2,484	2,481

COLLEGE STATION ISD

Saddle Creek Counter Clockwise Middle School Grade and Forecast Reports

SCHOOL	6	7	8	6TH-7TH	7TH-8TH	CAPACITY	UTILIZATION	ED	%ED
A&M CONSOLIDATED	337	342	320	679	662			227	34.3%
COLLEGE STATION	369	364	344	733	708			232	32.8%
MS #3	240	235	215	475	450			158	35.1%
TOTAL	946	941	879	1,887	1,820			617	33.9%

SCHOOL	2015/16	2016/17	2017/18	2018/19	2019/20	2020/21	2021/22	2022/23	2023/24	2024/25	2025/26
MS #3	450	480	547	580	655	735	762	769	787	825	844
COLLEGE STATION	708	710	726	767	798	860	881	871	866	880	888
A&M CONSOLIDATED	662	687	733	765	836	884	932	901	894	912	914
TOTAL	1,820	1,877	2,006	2,112	2,289	2,479	2,575	2,541	2,547	2,617	2,646

COLLEGE STATION ISD

Saddle Creek/Counter Clockwise High School Grade Report

SCHOOL	8	9	10	11	12	8TH-11TH	9TH-12TH	CAPACITY	UTILIZATION	ED	%ED
A&M CONSOLIDATED	455	506	453	470	422	1,884	1,851			523	28.3%
COLLEGE STATION	424	484	490	400	359	1,798	1,733			527	30.4%
TOTAL	879	990	943	870	781	3,682	3,584			1,050	29.3%

COLLEGE STATION ISD

Saddle Creek/Counter Clockwise High School Forecast Report

SCHOOL	2015/16	2016/17	2017/18	2018/19	2019/20	2020/21	2021/22	2022/23	2023/24	2024/25	2025/26
A&M CONSOLIDATED	1,851	1,919	1,977	2,044	2,133	2,244	2,373	2,526	2,667	2,789	2,857
COLLEGE STATION	1,733	1,760	1,861	1,965	2,118	2,261	2,439	2,613	2,758	2,884	2,963
TOTAL	3,584	3,679	3,838	4,009	4,251	4,505	4,812	5,139	5,425	5,673	5,820

MIDDLE SCHOOL FEEDER REPORT

MIDDLE SCHOOL TO HIGH SCHOOL ZONE	7th GRADE	8th GRADE	7 - 8 TOTAL	7th GRADE %	8th GRADE %	7-8 GRADE %
A&M CONSOLIDATED MIDDLE	341	316	657			
A&M CONSOLIDATED HIGH	311	273	584	91%	86%	89%
COLLEGE STATION HIGH	30	43	73	9%	14%	11%
COLLEGE STATION MIDDLE	364	344	708			
A&M CONSOLIDATED HIGH	168	170	338	46%	49%	48%
COLLEGE STATION HIGH	196	174	370	54%	51%	52%
MS #3	236	219	455			
A&M CONSOLIDATED HIGH	4	8	12	2%	4%	3%
COLLEGE STATION HIGH	232	211	443	98%	96%	97%